



HEALING THE PLANET TODAY WITH THE
TECHNOLOGY OF TOMORROW

OVERVIEW

Phireon Global Partners Specializes in new and emerging technology in various sectors, designed to heal the planet, better lives, and generate profits. We develop extraordinary technology and exclusively represent a number of advanced IP, including recently declassified technologies. **We Heal the Planet Today, With the Technology of Tomorrow.**

\$80 Billion in Infrastructure Development

OUR FOOTPRINT:

- BIOFUELS
- BLOCKCHAIN
- CLEAN ENERGY
- OIL & GAS REFINERIES
- AGRI SYSTEMS
- WATER FILTRATION
- HIGH SPEED RAIL
- DEEP WATER PORTS
- SMART CITY INFRASTRUCTURE
- ADVANCED SENSORS
- SECURE ONLINE ID
- HIPAA COMPLIANT BLOCKCHAIN
- WASTE TO ENERGY
- ASTEROID MINING
- SIGNAL PROPAGATION
- SECURITY



39 COUNTRIES



175 FACILITIES



BIOFUELS

Phireon Global Partners utilizes only those technologies that clean the air, water, food, and soil.

OUR BIOFUELS:

- Sequester CO₂ Better
- Create Healthy Agriculture
- Produce ZERO Waste
- Produce ZERO Industrial Waste
- Use Only Pure Genetics
- Remediate the Soil
- Clean the water
- Remove Environmental Pollutants



Our Reliance on Fossil Fuels is not just an Issue of Environmental Concern but also National Security. Now, Poor Prior Legislation is no longer an issue.

BIOFUELS (Bio Pellets)

Phireon Global Partners can provide partners with the most advanced, automated, zero carbon, efficient deep water ports in the world.

OUR BIO PELLETS:

- Can store indefinitely
- Generate 22-23 Gigajoules per ton
- Satisfy the 2016 Paris climate accords
- Completely eradicate Fly Ash in coal fire plants
- Produce ZERO Waste
- Have been deployed around the world



We work B.O.T (Build Operate Transfer) on our ports. The design and operation is considerably more appealing to clients and operators than the current out of date models.

DEEP WATER PORTS

Phireon Global Partners can provide partners with the most advanced, automated, zero carbon, efficient deep water ports in the world.

OUR AUTOMATED PORTS:

- Have a 151% higher throughput than current contemporary designs
- Are Fully Automated
- Reduces cost of operation by 60%
- Reduces work related risk and injury claims by 100%
- Produce ZERO Waste
- Have been deployed around the world



We work B.O.T (Build Operate Transfer) on our ports. The design and operation is considerably more appealing to clients and operators than the current out of date models.

Phireon Global Partners can build out, operate, and transfer top tier refineries. From concept and architecture to FEED construction and build out.

OUR REFINERIES AND PLANTS:

- Are currently deployed in 5+ sites around the world
- Meet and exceed EPA and green guidelines
- Are 30% more efficient
- Reduces work related risk and injury
- Produce more useful byproducts



We work B.O.T (Build Operate Transfer) on our refineries and petrochemical plants. The design and operation is considerably more appealing to clients and operators than the current out of date models.

Phireon Global Partners can build out EVERY aspect of a smart city from the ground up. From concept and architecture to FEED construction and build out.

OUR SMART CITIES:

- Are 100% net zero
- Are Fully Automated
- Turn all the waste to energy
- Sequesters Carbon through the buildings
- Reduce crime autonomously by 60%
- Have business models that generate Billions of dollars in revenue



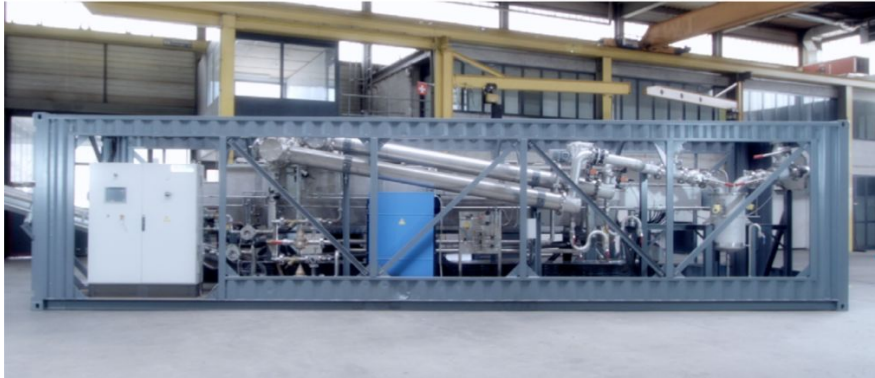
Our Designs and Architectures are more efficient and advanced than any competitors. The design and operation is considerably more appealing to clients and future generations.

BIOFUELS - (PLANTS IN OPERATION)



RDF -> ELECTRICITY

MOBILE UNIT



RDF -> HEAT

MOBILE
WASTE TO
HEAT



BIOFUELS - (GLOBAL FACILITIES)

USA



SWITZERLAND



FRANCE

CANADA

BIOFUELS - (PLANTS IN OPERATION)



Substitution of fossil fuel by syngas



2 MW capacity Syngas from wood chips

100 kW capacity Syngas from wood chips

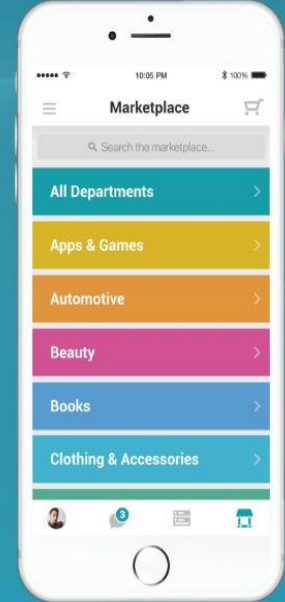
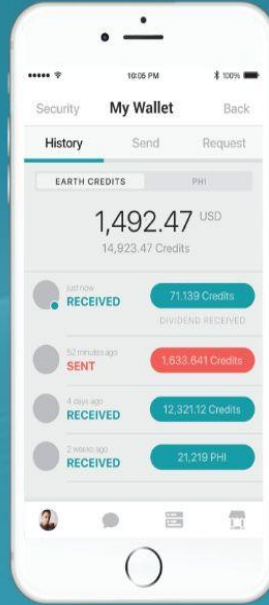
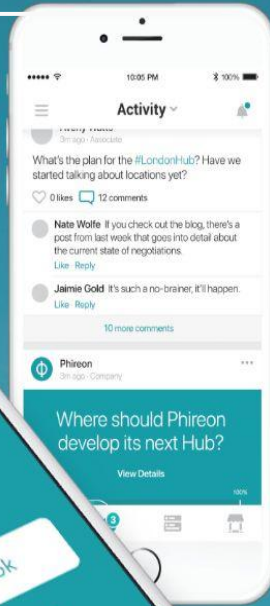
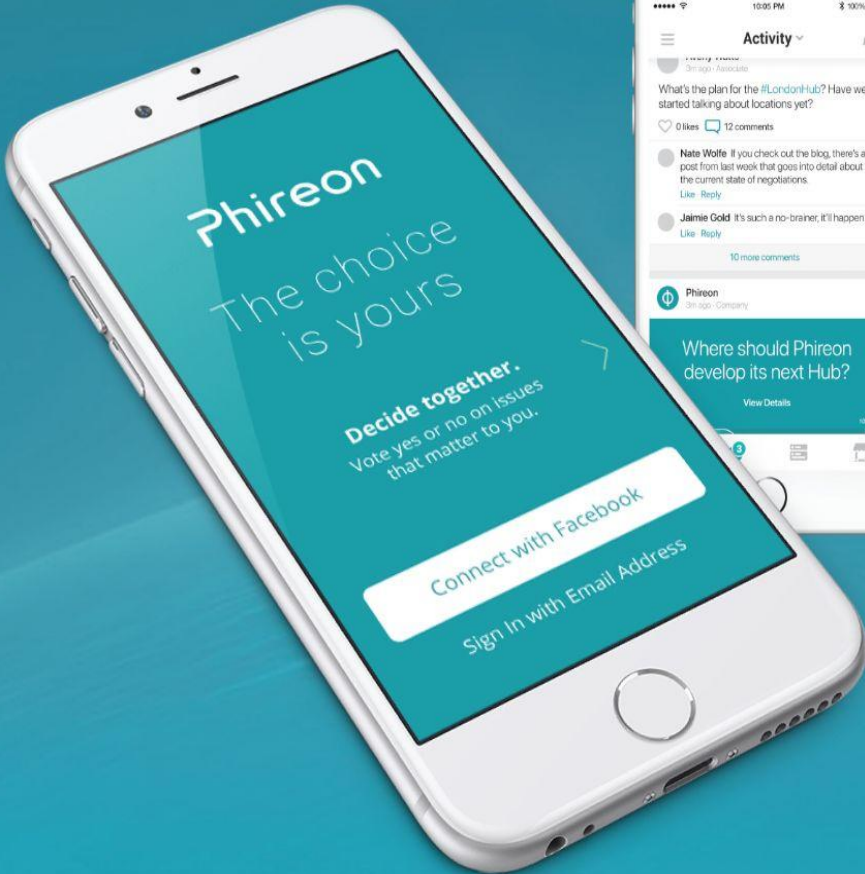


Phireon Global Partners is developing a proprietary blockchain based community management tool powered by custom private currencies. It is a **copyright proof** Social membership platform useful for funds, condo associations, membership companies like resorts, the Mayo Clinic, and even municipalities or nations for digital central banking and citizen management. Phireon will be the public cooperative corporation and a public demonstration of the power of our system. Our clients will get a whitelabeled membership management tool of their own with their own rewards club, custom currency, and transaction processing built in, increasing their transaction revenue and customer engagement.

Benefits include:

- Sophisticated blockchain based Community Management
- HIPAA compliant secure data storage and record keeping
- Custom Private Currency
- Copyright Proof
- Transactions (purchases, rent, mortgage, membership fees) processed natively adding more revenue to their bottom line
- Higher customer/member engagement
- Direct communication with clients and members
- Increased versatility, security, and transaction processing cross platforms and economic ecosystems.





→ SECURE DIGITAL BANKING

UTILIZING CUTTING EDGE QUANTUM COMPUTERS AND BLOCKCHAIN DEVELOPMENTS PHIREON PROVIDES FRICTIONLESS SECURE BANKING FOR ALL COMMUNITY MEMBERS

→ PRIVATE DATA

BLOCKCHAIN BASED CRYPTOGRAPHIC ARCHITECTURE ENABLES A SECURE UNIQUE ID FOR ALL CITIZENS.

→ CREATES JOBS

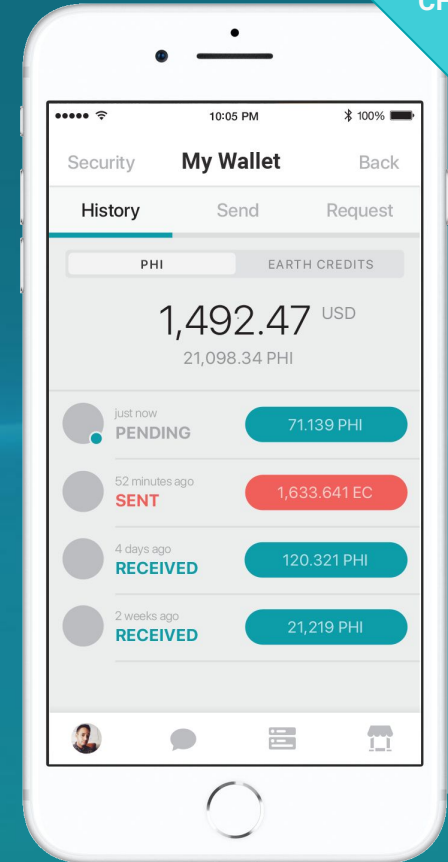
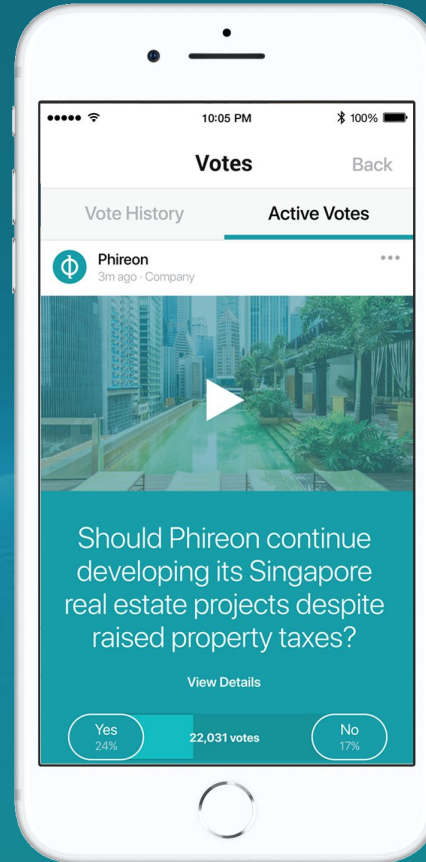
THROUGH CUSTOM CURRENCY DESIGN, MICRO PAYMENTS, AI EDUCATION, & UBI MECHANISMS, PHIREON CAN INCREASE JOBS AND EFFICACY OF PUBLIC BENEFIT PROJECTS

→ FRICTIONLESS TAXATION

WHETHER THROUGH TRANSACTION FEES OR COMMUNITY MEMBERSHIP COSTS, ALL COLLECTIONS ARE FRICTIONLESS AND AUTOMATIC

→ SECURE ID & WALLET

ALL BUREAUCRATIC SYSTEMS CAN BE INTEGRATED WITHIN THE SYSTEM THROUGH PERSONAL NFTS ENABLING A WIDE VARIETY OF ACCESS LEVELS AND AUTOMATED PERMISSIONS.



→ COMMUNITY EDUCATION

THROUGH AI, HOLOGRAPHIC TECHNOLOGY, AND GAMIFYING THEIR SOCIO CORPORATE LIVES PHIREON CAN ENGAGE CITIZENS, EDUCATE THEM, TRACK THEIR ADVANCEMENT AND SKILLS WITH A HIGH DEGREE OF GRANULARITY

→ UBI

BY INVOLVING CITIZENS IN THE COLLECTIVE COMMUNITY PHIREON ENABLES A TRULY UNIVERSAL BASIC WAGE FOR THEIR CONTRIBUTIONS

→ REAL TIME DATA

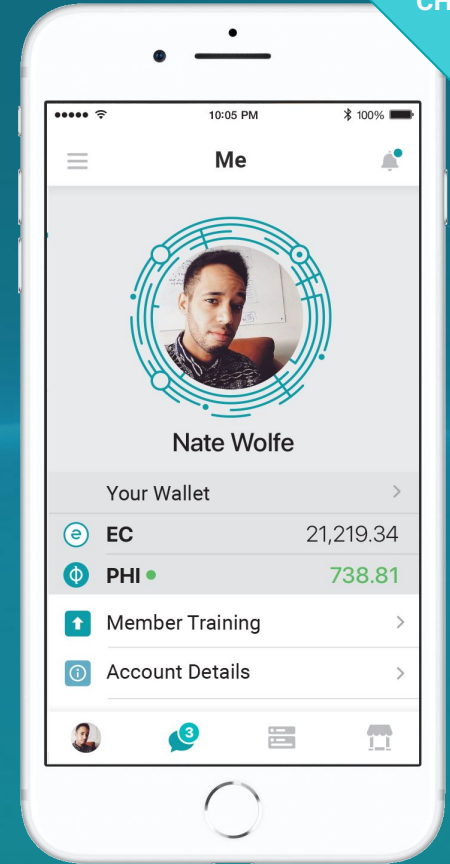
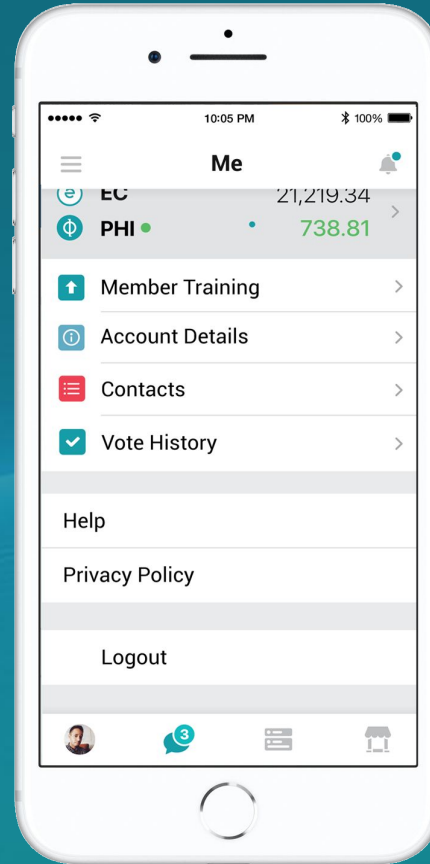
PHIREON PROVIDES A REAL TIME SECURE ANALYSIS OF THE CITIZENS SENTIMENTS AND GOALS WHILE PROTECTING THEIR INDIVIDUAL PRIVACY

→ MEDICAL RECORDS

HIPAA COMPLIANT MEDICAL RECORD STORAGE AND MANAGEMENT ALLOWS PATIENTS TO EASILY TRANSFER THEIR MEDICAL RECORDS FROM PROVIDER TO PROVIDER SEAMLESSLY AND SECURELY INCREASING QUALITY OF CARE RESULTS AND INTEROPERABILITY

→ CITIZEN MANAGEMENT

ALL LICENSES, PASSPORTS, AND SECURE DIGITAL ID RECORDS CAN BE MANAGED WITHIN THE APP ACROSS NUMEROUS JURISDICTIONS





OUR PAYMENT SYSTEMS ALLOW USERS TO ENGAGE IN COMMERCE AS THEY ARE USED TO, AND ALLOWS PHIREON TO PROCESS ALL THE TRANSACTIONS OF NUMEROUS CLIENTS ECOSYSTEMS SECURELY AND EFFICIENTLY.



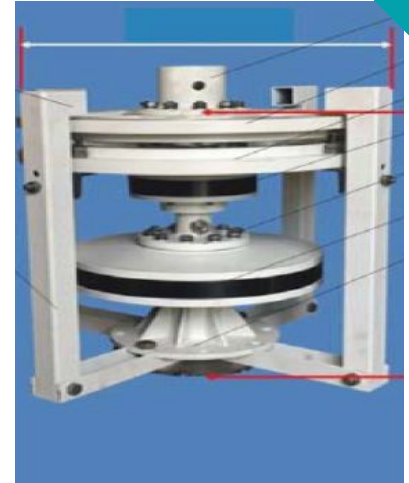
SYSTEM INCLUDES

- 1000W Turbine w/ Mag Lev
- 1.5kWh Per Pole
- **Can be in series for 100's of MEGAWATTS**
- Solar Panels
- Continuous Basalt Fiber Poles
- Withstand CAT 5 Hurricane
- High Heat Resistance
- Highly Freeze Resistant
- LED lights up to 130 LMW
- Gel Batteries
- Controller Monitor
- 3 times stronger than steel
- 120 Year Life Expectancy
- Highest Efficiency in Industry



USE CASES

- Smart Cities
- Signal Propagation
- IOT Connectivity in Cities
- Off Grid Cell Tower
- Mesh Networks
- Highways
- Parking Lots
- Remote Roads
- Border Security
- Remote Mining Forestry Headquarters
- Ports & Marinas



PERMANENT MAGNETIC POWER STATIONS

- Simple → Easy to operate
- Robust → very low maintenance
- 120 Year lifespan → No Batteries needed
- 10 KW → 200 MW
- 100% Clean Energy → Meets all UN SDGs

PROVEN INDUSTRIAL TECHNOLOGY

- Securing four National Borders
 - System in place in Tokyo
 - Numerous Locations around the world
-
- ✓ Replaces Needs for batteries
 - ✓ Peak Power on Demand
 - ✓ Produces Power Directly
 - ✓ We Control PERFECTLY Manufacturing
 - ✓ We Control PERFECTLY Power demand Cycle



- 100MW System can be Built in containers or directly in the facility.
- Can be tied directly into power grid and produce on demand electricity with consistent usage for your facility.
- 20 year term on a lease of our system ensure \$.03 cents per Kilowatt for 20 years, and \$.00 cents thereafter.
- All other power besides the power needs of your facility can be sold off to local municipality for added revenue.
- **PGP MANUFACTURES AND INSTALLS THESE SYSTEMS WITHIN 6 MONTHS FROM FINANCING.**



POWER - (POWER POLES CURRENTLY DEPLOYED)



SAUDI ROYAL KINGDOM / CHINESE GOVERNMENT / INTEL HEADQUARTERS , CHINA /
JAPANESE SUMMER OLYMPICS 2020 / FERRARI HEADQUARTERS, ITALY / PALM BEACH
COUNTY DEPARTMENT OF TRANSPORTATION, FL USA

TRUE ROBOTIC VISION

- INCLUDES NEW RECENTLY DECLASSIFIED SENSOR TECHNOLOGY THAT HAS NOT HIT THE MARKET
- FULL SPECTRUM 100-40,000nm
- ONLY SYSTEM ON THE PLANET THAT CAN PROVIDE TRUE ATOMIC LEVEL 3D TWINNING
- PERTINENT FOR:
 - TELEMEDICINE/ MEDICAL
 - SPACE/ ROBOTICS
 - AUTONOMOUS DRIVING
 - SECURITY
 - BIORECOGNITION



REAL FACIAL RECOGNITION



Drone
Detection



LONG RANGE THREAT DETECTION

PHIREON PHONE

- INCLUDES NEW RECENTLY DECLASSIFIED SENSOR TECHNOLOGY THAT HAS NOT HIT THE MARKET
- ABLE TO SCAN AT THE MOLECULAR LEVEL
- CAN VERIFY GOLD, COMMODITIES, AND MORE
- CAN SCAN MEDICALLY FOR COVID AND OTHER DISEASES
- EQUIVALENT TO THE STAR TREK "TRI-CORDER"



REDEFINING SUSTAINABLE CONCRETE

Concrete made from **salt water, recycled or contaminated aggregates** and **cement without chloride limits** can dramatically redefine the sustainability of concrete.



CONCRETE

FRESH water

Cement with low Chloride content (200ppm)

Aggregates (sand rock)



SEAMIX

SALT water

Cement with no Chloride content limits

Recycled or contaminated Aggregates

ALTERNATIVES TO TRADITIONAL FINE AGGREGATES

SEAMIX uses offshore sand and recycled concrete aggregates (RCA), even when contaminated with chlorides from years of exposure. The relaxed chloride threshold enables replacing ground limestone with kiln dust.

- ✓ More readily available
- ✓ Easier to extract
- ✓ Mitigation of CO₂ Emissions
- ✓ Smaller environmental impact
- ✓ Lower costs

SEAMIX INNOVATION CAN:

FOR THE FIRST TIME IN THE U.S., CONCRETE IS SUSTAINABLE

Experimental results show that SEAMIX is a **viable option** for addressing **sustainability** issues of **concrete**.

180 BILLION

Potentially CONSERVE 180 billion gallons of freshwater ANNUALLY

20%

REDUCE the CARBON FOOTPRINT from the concrete industry by 20%

70%

RE-UTILIZE 70% of the construction and DEMOLITION WASTE

CONSERVE

SAVE on the use of non-renewable resources

30%

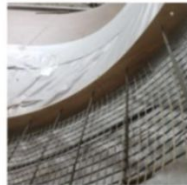
LOWER the cement cost by 30%

2X

DOUBLE the lifespan of concrete reinforced structures

BASALT AND FIBER REINFORCED POLYMER (BFRP) REBAR

Designed to be stronger, lighter, longer-lasting than steel, and resistant to salt and chloride, the volcanic-mined basalt rebar materials are a paradigm shift in the construction industry.



CONSTRUCTION SAVINGS



RESISTANT TO ALKALI CORROSION AND ACIDS



BEST WEIGHT-STRENGTH RATIO



LOWEST CARBON FOOTPRINT



CAN BE USED WITH SALT WATER



MARINE FRIENDLY



NON-TOXIC

AEROPONICS WALL

- Low Wattage (AC & DC Options) Plug in Wall or Connect Solar
- Low Water Usage (90%)
- **576 Plants per 18 sq ft** (64k plants in 20k sq ft facility)
- Scalable to 10's of thousands sq ft
- Anti Microbial/Bacterial Food Grade Plastic
- Start Seeds Right in Wall
- Grow Medium is Organic, Compostable and may be sourced locally in the UAE
- Integrates perfectly with a Biodigester Program
- Manufactured in the heart of Farm Country PA.
- Can grow a large list of produce successfully proven
- Ease of Harvest
- No Weeding





LIGHTING SYSTEMS

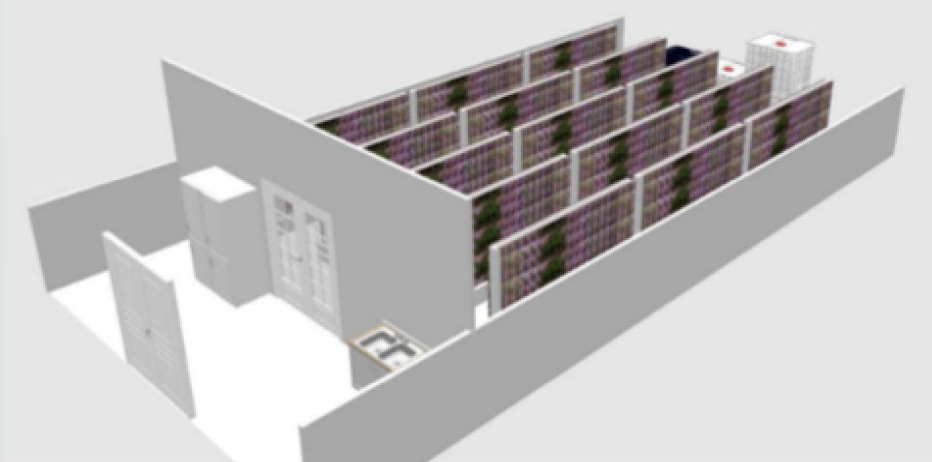
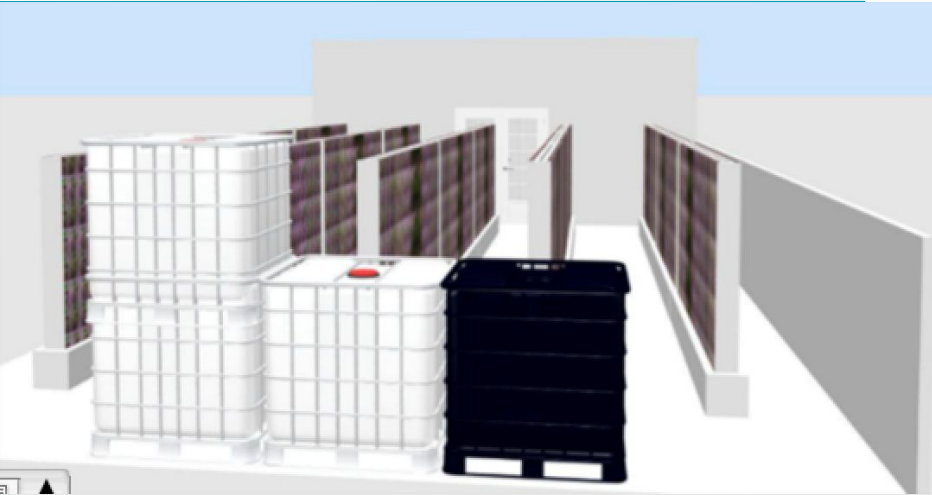
- USES EMF not PHOTONS
- Penetrates through plant to ROOTS
- Grows 4 cycles per season
- Low Wattage + Extremely Low Heat
- Grow Room Humidity Reduced
- Mold & Plant Disease Reduced
- Easy to Install and Adjust
- Simple Low Cost Infrastructure for Installation
- Proven to increase plant health at the cellular level
- Beat out Gavitas Flagship Lights in a 3rd party study
- Improves Plant Health
- No Canopy Burn – plants can actually touch the lights



Our low cost high efficiency grow systems are so easy to install and use that a whole nation could be fed simply by dedicating several floors on several high rises.



Utilizing our grow systems can yield many different varieties of nutritionally dense crops. We have a VERY comprehensive list of crops we have successfully grown and tested.



- ✓ Our Systems Can Be Highly Customized
- ✓ Our grow systems can be implemented in Space Travel
- ✓ Can Feed a Desert Nation
- ✓ High Efficiency, Low Power
- ✓ Plug and Play Ease of Use

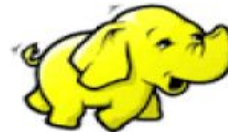
PARTNERS - (Not Including Nations)



JABIL



ELITE PARTNER



hadoop



 SUSTAINABLE DEVELOPMENT GOALS



JUSTICE - (UN SDG GOALS)



Each System in PGP is designed to end poverty including Phireon



Phireons in built AI assisted education and our Biodigestor programs help people become self reliant



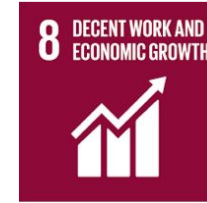
Our power systems provide inexpensive green energy that is reliable and robust



Our grow systems literally feed anyone involved in the system



Our systems are designed to empower all people regardless of sex, class, creed.



Phireon provides a Universal Basic Wage for involving people in their governance



Our lighting systems, food systems, and sensors come together to provide full spectrum health



Our Biofuels systems clean waterways and remediate bodies of water.



Each of our verticals builds new industries, sectors, and pathways for people to develop in.

JUSTICE - (UN SDG GOALS)



Phireon serves People across all socioeconomic spectrum to achieve energy independence, sustainable waste management, and food security.



Our Pure Genetics, biofuels, and practices sequester more carbon than nearly every other method available.



Peace is easier when we end poverty and provide food security. All PGP systems are designed with this in mind



Phireon Systems are designed to bring about sustainable cities and communities.



Our biofuels systems remediate the waterways in every jurisdiction we operate in



Phireon works across 175 facilities in 39 countries and is cross disciplinary and holistic in its approach to include all contributors.



With efficiencies in our design and implementation all systems operate more efficiently and less wastefully



Our Pure Hemp genetics remediate brownfields within two seasons.

Thank You!